

BREAKFAST

15 PER PERSON

- EGGS, BACON, SAUSAGE & HOME FRIES
- FRESHLY BAKED BAGELS & CREAM CHEESE
- COFFEE & FRESH SQUEEZED ORANGE JUICE

BAGELS & SCHMEARS

9 PER PERSON
[10 PERSON MIN]

- ASSORTED FRESHLY BAKED BAGELS
- CHOICE OF CREAM CHEESE SPREADS
PLAIN, CHIVE, VEGETABLE, NOVA
- TOMATOES, ONIONS, CUCUMBERS & OLIVES

FRUIT PLATTER

75
10-12 PEOPLE

- FRESH CUT HONEYDEW, CANTALOUPE, GRAPES, STRAWBERRIES, BLUEBERRIES, PINEAPPLE & SEASONAL EXTRAS

CHEESE PLATTER

75
10-15 PEOPLE

- ASSORTED SLICED OR CUBED CHEESES
- PROVOLONE, SWISS, AMERICAN, MUENSTER, CHEDDAR, JARLSBERG, ALPINE LACE

SWEETS PLATTER

70 16' PLATTER
80 18' PLATTER

- FRESHLY BAKED CAKES, COOKIES, BROWNIES, RUGELACH & BITE-SIZE DANISHES

CUSTOMER INFO

NAME _____

PHONE _____

DELIVERY _____ PICKUP _____

DELIVERY ADDRESS _____

DATE/TIME NEEDED _____

PAYMENT INFO

CASH _____ MC _____ VISA _____ AMEX _____

CARD # _____ EXP. DATE _____

ORDER TOTAL _____

OTHER INSTRUCTIONS

WWW.BAGELBAREAST.COM

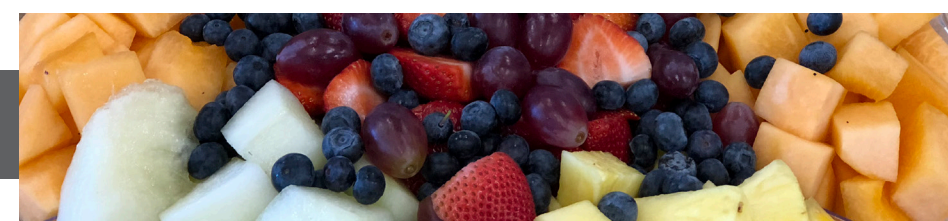
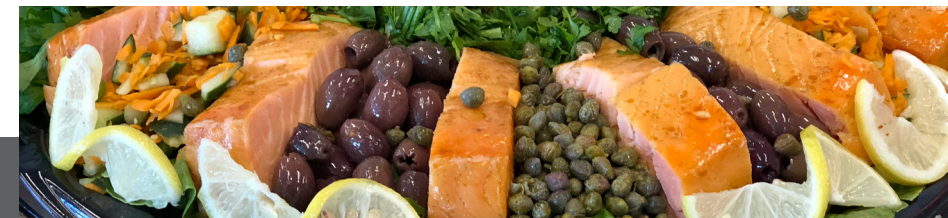
1990 NE 123rd STREET - NORTH MIAMI, FL 33181

305.895.7022



BAGEL BAR EAST

DELICATESSEN & BAKERY



CATERING MENU

SANDWICH PLATTER | 16 PER PERSON [10 PERSON MIN]

- CHOICE OF OUR FINEST MEATS - CORNED BEEF, PASTRAMI, ROAST BEEF, SALAMI, TONGUE, TURKEY, TURKEY PASTRAMI, HAM OR HOMEMADE SALADS - TUNA, CHICKEN, EGG, WHITEFISH, CHOPPED LIVER, SHRIMP, CRAB MEAT, CHOPPED HERRING, BAKED SALMON, CRAISIN DILL TUNA
- CHOICE OF HOUSEMADE RYE BREAD, BAGELS, BIALYS OR ROLLS
- CHOICE OF TWO - SLAW, POTATO, MACARONI OR CUCUMBER SALAD
- PICKLES, MUSTARD, MAYO & RUSSIAN DRESSING

MEAT PLATTER | 16 PER PERSON [10 PERSON MIN]

- OUR FINEST SLICED MEATS - CORNED BEEF, PASTRAMI, HAM, ROAST BEEF, SALAMI, TONGUE, TURKEY, TURKEY PASTRAMI
- CHOICE OF HOUSEMADE RYE BREAD OR ROLLS
- CHOICE OF TWO - SLAW, POTATO, MACARONI OR CUCUMBER SALAD
- RELISH TRAY, MUSTARD, MAYO & RUSSIAN DRESSING

SALAD PLATTER | 15 PER PERSON [10 PERSON MIN]

- OUR HOMEMADE SALADS - WHITE MEAT TUNA, CHICKEN, EGG, WHITEFISH, CHOPPED LIVER, CHOPPED HERRING, BAKED SALMON, CRAISIN DILL TUNA
- FRESHLY BAKED BAGELS & BIALYS
- SLICED CUCUMBERS, TOMATOES & ONIONS
- OLIVES, PEPPERS & LEMONS

SMOKED FISH PLATTER | 21 PER PERSON [10 PERSON MIN]

- HAND-SLICED WHITEFISH, NOVA, LOX, BAKED SALMON, SABLE, STURGEON
- VARIETY OF CREAM CHEESE SPREADS PLAIN, CHIVE, VEGETABLE, NOVA
- FRESHLY BAKED BAGELS OR BIALYS
- SLICED CUCUMBERS, TOMATOES & ONIONS
- OLIVES, PEPPERS & LEMONS

TURKEY DINNER | 300 15-18 PEOPLE

- 20 LB. WHOLE ROASTED TURKEY - CARVED AND DECORATED WITH GRAVY, STUFFING & CRANBERRY SAUCE
- 3 LB. DELI MEAT PLATTER
- 2 LBS. CHOPPED LIVER
- 2 DOZEN LATKES
- CHOICE OF TWO [3 LBS. EACH] SLAW, POTATO, MACARONI OR CUCUMBER SALAD
- HOUSE-MADE RYE BREAD OR BAGELS
- RELISH TRAY, MUSTARD, MAYO & RUSSIAN DRESSING

CHICKEN DINNER | 160 10 PEOPLE

- 2 WHOLE ROASTED CHICKENS - CUT INTO QUARTERS
- 3 LBS. BRISKET WITH GRAVY
- 3 QTS. MATZO BALL SOUP
- 12 LATKES
- CHOICE OF TWO [2 LBS. EACH] SLAW, POTATO, MACARONI OR CUCUMBER SALAD
- TRAY OF SOUR PICKLES
- MUSTARD & RUSSIAN DRESSING

ROASTED TURKEY | 10 PER LB. [MIN 18 LBS.]

- 1 WHOLE, FRESHLY ROASTED TURKEY [CARVING AVAILABLE]
- STUFFING, GRAVY & CRANBERRY SAUCE

TENDER PLATTER | SUGG. SERVING 2-3 PER PERSON

- CRISPY CHICKEN TENDERS
- CELERY TRAY & BLUE CHEESE DRESSING

30 [20 TENDERS]	75 [50 TENDERS]	120 [80 TENDERS]
45 [30 TENDERS]	90 [60 TENDERS]	135 [90 TENDERS]
60 [40 TENDERS]	105 [70 TENDERS]	150 [100 TENDERS]

WING PLATTER | SUGG. SERVING 4-5 PER PERSON

- CHOICE OF MILD, MEDIUM, HOT, BARBEQUE OR TERIYAKI
- CELERY TRAY & BLUE CHEESE DRESSING

60 [40 WINGS]	90 [60 WINGS]	120 [80 WINGS]	150 [100 WINGS]
75 [50 WINGS]	105 [70 WINGS]	135 [90 WINGS]	

VEGETABLE PLATTER | 75 10-15 PEOPLE

- SLICED BROCCOLI, CAULIFLOWER, BABY CARROTS, CELERY, CHERRY TOMATOES
- CHOICE OF DRESSING - RANCH, BLUE CHEESE, HONEY MUSTARD, FETA VINAIGRETTE, CAESAR, RUSSIAN, HERB VINAIGRETTE, ITALIAN

TRADITIONAL SALADS

- CLASSIC CAESAR SALAD
50 MEDIUM [SERVES 10 PEOPLE]
70 MEDIUM W/CHICKEN [SERVES 10 PEOPLE]
70 LARGE [SERVES 20 PEOPLE]
90 LARGE W/CHICKEN [SERVES 20 PEOPLE]
- FAMOUS CHEF SALAD
LETTUCE, TOMATOES, CARROTS, CUCUMBERS, GREEN PEPPERS, EGG, CHEESE & CHOICE OF MEAT
80 MEDIUM [SERVES 10 PEOPLE]
120 LARGE [SERVES 20 PEOPLE]
- GREEK SALAD
LETTUCE, TOMATOES, RED ONIONS, CUCUMBERS, OLIVES, FETA & PEPPERONCINI
50 MEDIUM [SERVES 10 PEOPLE]
90 LARGE [SERVES 20 PEOPLE]
- HOUSE SALAD
LETTUCE, TOMATOES, CARROTS, CUCUMBERS & GREEN PEPPERS
50 MEDIUM [SERVES 10 PEOPLE]
70 LARGE [SERVES 20 PEOPLE]